

# Focus on Conservation

Photography Contest  
2009



Category: Geology  
Division: Advanced (R. Buchbinder)

## Get into the Preserve this April and take your best shot for conservation.



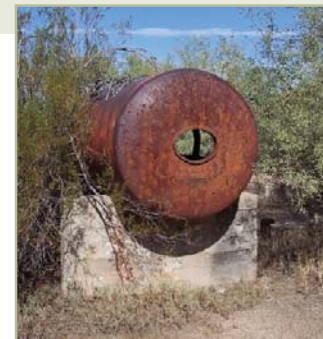
Category: Plants or Animals  
Division: Advanced (B. White)

Participating in MSC's annual *Focus on Conservation* photography contest is one way you can help us achieve our mission. Through these photographs, we bring the Preserve into the community as a traveling exhibit, on our website, and in a printed exhibit catalog. For some, this may be their introduction to the Preserve, sparking their interest in hiking, mountain biking, or volunteering. For others, it may be an accessible way for them to experience the beauty of this living treasure.

This year's judges will consider both technical merit, and the illustration of the rich biodiversity and unique nature of the Preserve. The three top images will be recognized with a monetary prize (grand prize: \$500, second place: \$250, and third place: \$100.) We will also recognize three division winners (advanced, amateur, and youth) for each topic category. This year's four topics are geology, plants and/or animals, human impacts, and recreation.

### Entry Guidelines\*

- Photographs must be taken in the Preserve, and during the month of April, 2009.
- Submissions must be titled, be between 8x10" and 9x12", and include both a borderless print image and a digital copy at 200 dpi.
- Submissions will not be returned.
- Photographs with date stamps, or those that are mounted or matted will not be considered.
- MSC reserves the right to use all photos, with photo credit, for any purpose. Photographer retains copyright.
- Proceeds from the sale of print items associated with the contest will solely benefit MSC.



Category: Human Impacts  
Division: Amateur (J. Woelke)

Category: Recreation  
Division: Advanced (M. Jensen)

\* Expanded guideline and contest information can be found on MSC's website: [www.mcdowellsonoran.org](http://www.mcdowellsonoran.org)

## McDowell Sonoran Conservancy 2009 Focus on Conservation Entry Form

Please complete and sign this entry form and attach a copy to each submission.

Please deliver your submission to the MSC office no later than 5 p.m. on May 15, 2009. We recommend that you deliver rather than mail your entry, if at all possible. If you mail your entry, please package it appropriately. Damaged entries will not be considered.

Name

Phone

Email

Address

**Indicate the category for your entry (select only one)**

- Plants and/or Animals       Geology  
 Human Impacts/Evidence       Recreation

**Indicate a division for your entry (select only one)**

- Youth (under 18)       Amateur       Advanced

I have read the entry guidelines and hereby attest that my entry meets the criteria and I agree to contest guidelines.

Sign and Date